

American AVK Series 34 Indicator Posts Exploded Parts Breakdown

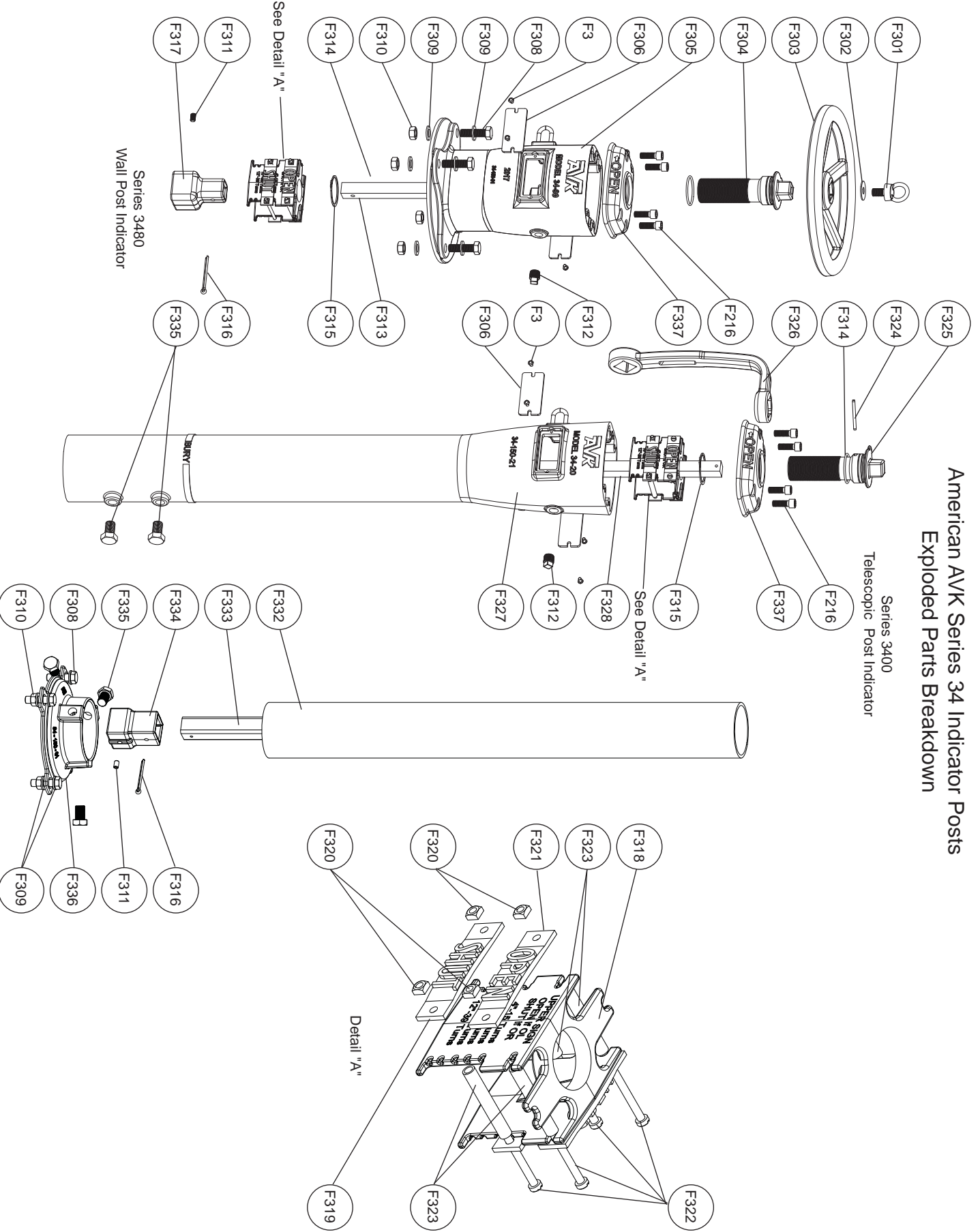


Fig. 1

Item No.	Description	Material
F216	Bonnet Bolt	Zinc Plate, 304, 316 Stainless steel
F3	Window Screw	316 Stainless steel
F301	Eyebolt	Zinc Plated Steel
F302	Eye Bolt Washer M16x50x3	Zinc Plated Steel
F303	Handwheel (3480)	Grey Iron, ASTM A126, "B"
F304	Stem Nut - Series 3480	Copper Alloy
F305	Wall Post Head	Ductile Iron, ASTM A536
F306	Window	Acrylic (PMMA)
F308	Flange Bolt	Zinc Plate, 304, 316 Stainless steel
F309	Flange Bolt Washer	Zinc Plate, 304, 316 Stainless steel
F310	Flange Bolt Nut	Zinc Plate, 304, 316 Stainless steel
F311	Wrench Nut Adapter Set Screw	304 Stainless steel
F312	1/2" Pipe Plug	Zinc Plated Steel
F313	Wall Post Stem	Mild Steel
F314	Stem Nut O-ring	NBR
F315	Stem Nut Snap Ring	304 Stainless steel
F316	Cotter Pin	431 Stainless steel
F317	Wrench Nut Adapter (3480)	Ductile Iron, ASTM A536
F318	Target	Copper Alloy
F319	Shut Plate	Painted Aluminum
F320	Plate Nut	Zinc Plated Steel
F321	Open Plate	Painted Aluminum
F322	Plate Attachment Screw	Zinc Plated Steel
F323	Target Spacer	Mild Steel
F324	Upper Stem Attachment Pin (3400)	316 Stainless steel
F325	Stem Nut - Series 3400	Copper Alloy
F326	Operating Wrench	Ductile Iron, ASTM A536
F327	Telescopic Post Head/Upper Barrel	Ductile Iron, ASTM A536
F328	Telescopic Post Upper Stem	Mild Steel
F332	Lower Barrel	PVC - DR14 UL Listed
F333	Lower Stem	Mild Steel
F334	Wrench Nut Adapter (3400)	Ductile Iron, ASTM A536
F335	Telescopic Post Attachment Bolt	Zinc Plate, 304, 316 Stainless steel
F336	Bell Adapter	Ductile Iron, ASTM A536
F337	Bonnet	Ductile Iron, ASTM A536