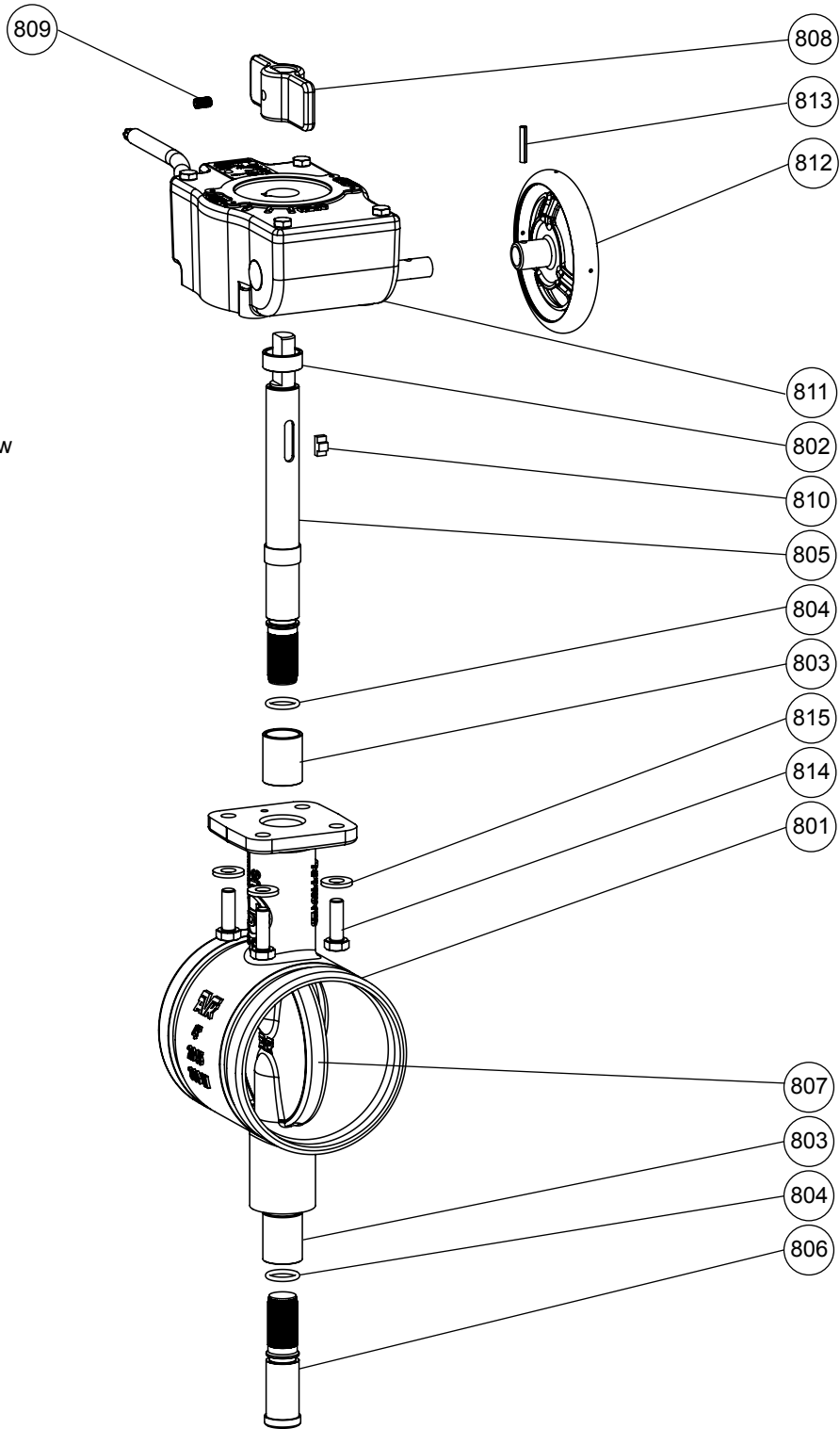


AVK Series 815 Grooved Butterfly Valve
 Exploded Parts Breakdown
 2½-inch through 8-inch

Components:

- 801. Body
- 802. Short Bushing
- 803. Long Bushing
- 804. Shaft O-ring
- 805. Drive Shaft
- 806. Stub Shaft
- 807. Disc
- 808. Indicator Flag
- 809. Indicator Flag Set Screw
- 810. Shear Key
- 811. Gearbox
- 812. Hand Wheel
- 813. Hand Wheel Pin
- 814. Gearbox Bolt
- 815. Gearbox Washer



Item No.	Description	Material
801	Body	Ductile iron, ASTM A536
802	Short Bushing	Metal Composite Bearing
803	Long Bushng	Metal Composite Bearing
804	Shaft O-ring	NBR
805	Drive Shaft	431 Stainless steel
806	Stub Shaft	431 Stainless steel
807	Disc	EPDM encapsulated ductile iron disc
808	Indicator Flag	Grey iron, ASTM A126 Class B
809	Indicator Flag Set Screw	304 Stainless steel
810*	Shear Key	Aluminum
811	Gearbox	N/A
812	Hand Wheel	Mild Steel
813*	Hand Wheel Pin	304 Stainless steel
814	Gearbox Bolt	304 Stainless steel
815	Gearbox Washer	304 Stainless steel

* AVK Series 815 Butterfly Valves are designed to be maintenance free. In a accidental instance, that the gearbox is over torqued, the Shear Key (810), or Hand Wheel Pin (813), may require replacement.